

**MAGNETIC DRIVE CENTRIFUGAL PUMP.
A REAL MONEY SAVER**

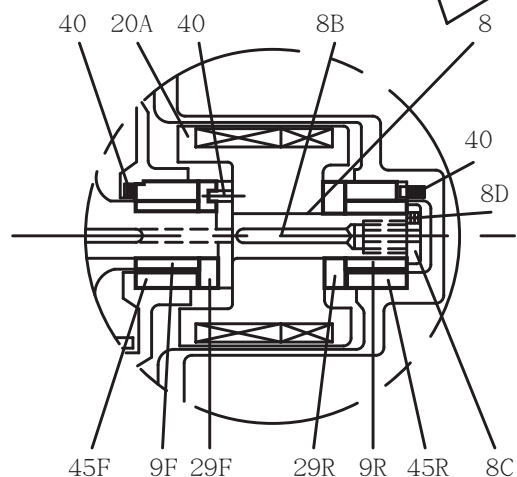
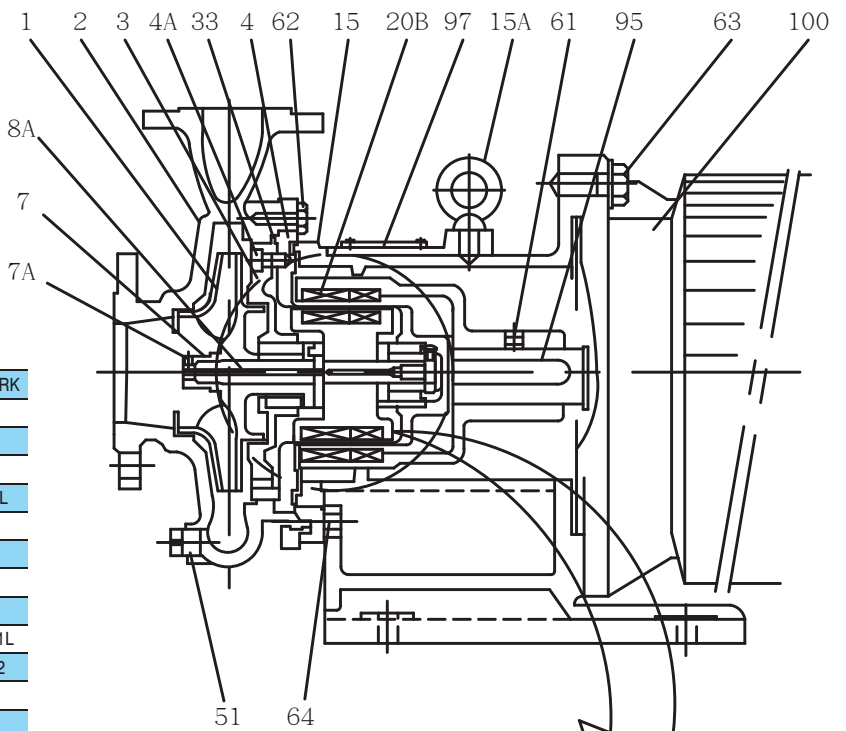
GMPL 3.7kW~15kW

- 스테인레스로 만들어진, 마그네트 원리로 작동, 씰이없는 구조다.
- 고 효율을 자랑하며, 작동에 안전성 최고
- 환경보호 측면을 고려한 펌프
- 조립, 분해, 재조립 까지 소요시간이 적게드는 쉬운 유지 보수
- 물봉합과 같은 장치 불필요
- 베어링 중심 맞추기 등 불필요
- 전 수명 사이클 비용 최소화

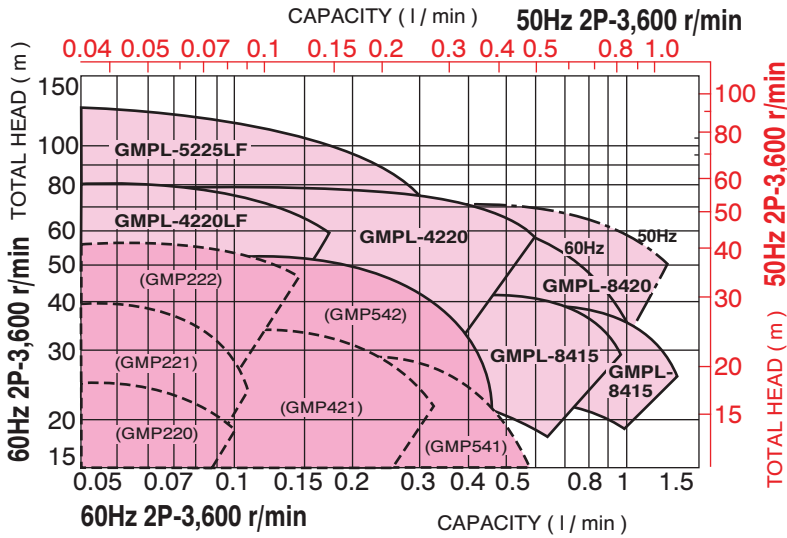


■ 재질 ;

MARK	NAME OF PART	MAT'L	USE NO/R	REMARK
1	IMPELLER	SCS14	1	
2	CASING	SCS14	1	
3	CASING COVER	SCS14	1	
4	REAR CASING	SUS316	1	M8X20L
4A	HEX SOCKET HEAD BOLT	SUS316	4	
7	IMPELLER NUT	SCS14	1	M8X8L
7A	SET SCREW FOR IMPELLER NUT	SUS316	1	
8	SHAFT	SUS316	1	
8A	IMPELLER KEY	SUS316	1	5X5X41L
8B	INNER MAGNET KEY	SUS316	1	5X5X52
8C	SLEEVE BOLT	SUS316	1	
8D	SET SCREW	SUS316	1	M6X8L
9	SLEEVE	SIC	2	
15	HOUSING	FCD200	1	
15A	EYE BOLT	SF440	1	M16
20A	INNER MAGNET COUPLING		1	
	MAGNET	SUS316	1	
20B	OUTER MAGNET COUPLING	FCD	1	
	MAGNET	SS400	1	
29	THRUST RING	SIC	2	
33	SHEET GASKET		1	1.5t
40	SET SCREW	SUS316	3	M6X6L
45	BUSHING	SIC	2	
51	DRAIN PLUG	SUS316	1	PT1/2
61	OUTER MAGNET SET SCREW	SCM435	1	M8x8L
62	CASING HEX HEAD BOLT	SUS304	8	M12X30L
63	HEXAGON BOLT(MOTOR)	SS400	4	
64	HEX HEAD BOLT(FLANGE)	SUS304	4	M12X35L
95	MOTOR SHAFT KEY	S45C	1	
97	SPECIFICATION PLATE	SUS304	1	
100	MOTOR	-	1	



■ 펌프 선정 차트

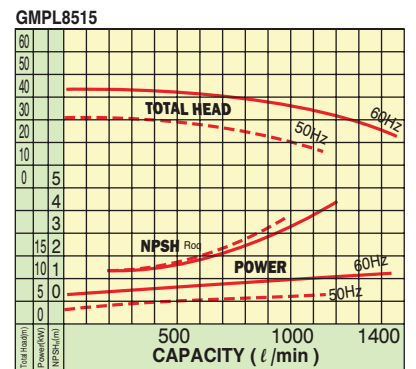
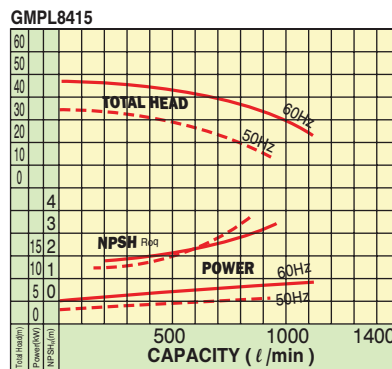
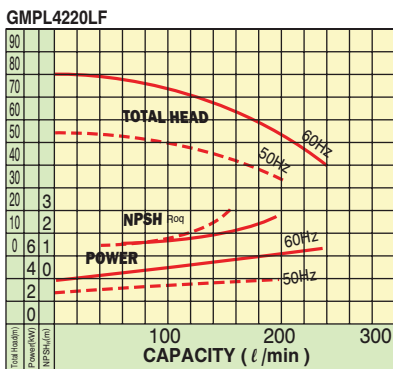
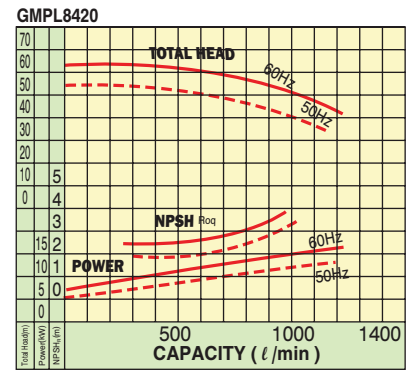
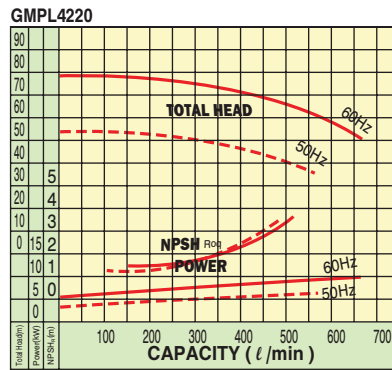
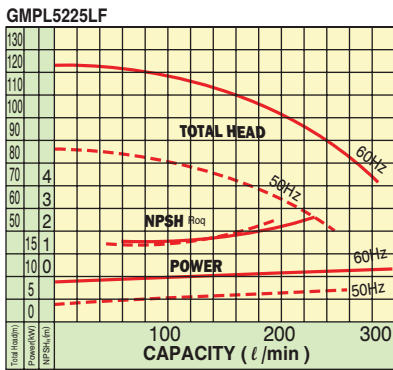


■ 주요 특징

GMPL/GMHL GMLL

- 최대 전양정 60Hz 130m | 50Hz 85m
- 최대 유량 1.3m³/min | 1.1m³/min
- 최대 온도 180°C | 300°C | 180°C
- 최소 온도 -30°C | -30°C | -80°C
- 최대 비중 2.0
- 최대 점도 300cp
- 설계 압 12kgf/cm²(WT-18kgf/cm²)
(5225LF-16kgf/cm²)
- 구경 플렌취 40/25A~80/50A
- 임펠라 ANSI-150Lb/JIS10K-RF
- 모터 CLOSED
- 모터 회전 3.7kW~15kW(FLANGE)
- 케이싱 3600 | 3000
- SUS316

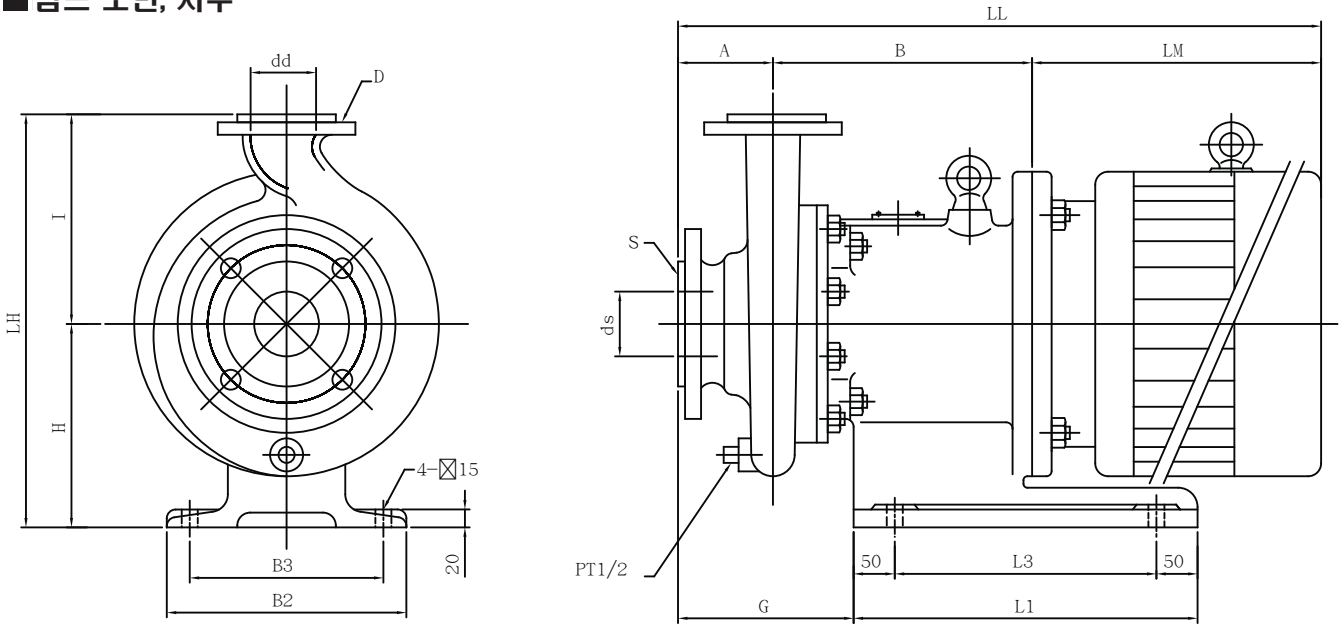
■ 성능 곡선



■ 대표적인 적용 케미칼

ACETALDEHYDE	CHLOROSULFONIC ACID	ISOPROPYL ALCOHOL	NAOH
ACETIC ACID	CITRIC ACID	MALEFIC ACID	STYRENE
ACETON	ETHANOL	MDI	H ₂ SO ₄
ACRYLONITRILE	ETHYLENE	METHACRYLATES	TDI
ACRYLIC ACID	ETHYLENE OXIDE	METHANOL	TOLUENE
AMMONIUM HYDROXIDE	FLUORINERT(3M)	PHENOL	VINYL ACETATE
AMYL ACETATE	GLYCOL	PHOSGENE	VINYL CHLORIDE
ANHYDROUS AMMONIA	HEAT TRNSFER FLUID	PHOSPHORIC ACID	DO MONOMER
BENZENE	HEXANE	PURE WATER	HOT-WATER
BUTADIENE	HYDROFLUORIC ACID	SODIUM CARBONATE	XYLENE
CHLOROFORM	CYCLOHEXANE	SODIUM CHLORATE	

■ 펌프 도면, 치수



in mm

PUMP SIZE	MOTOR		BORE				PUMP & MOTOR														WEIGHT APPROX(kgf)			
	FRAME SIZE	OUTPUT (kW)	SUCT		DISCH		A	B	I	LH	G	LM	LL	H	B2	B3	L1	L3	PUMP	MOTOR				
			ds	S	dd	D																		
GMPL-4220-LF	112M	3.7	40		25		102	258		377		355	715	212	250	200	350	250	70	40				
	132SM	5.5 7.5								175	400	760											75	80
	160ML	11 15																						110
GMPL-4220	112M	3.7	40	ANSI150L bRF	25	ANSI150L bRF	102	258		377		355	715	212	250	200	350	250	75	40				
	132SM	5.5 7.5								175	400	760											80	80
	160ML	11 15																						115
GMPL-8415	112M	3.7	80	ANSI150L bRF	40	ANSI150L bRF	102	258		377		355	715	212	250	200	350	250	80	40				
	132SM	5.5 7.5								175	400	760											85	80
	160LM	11 15																						120
GMPL-8420	112M	3.7	80	JIS10KRF or ANSI150L bRF	40	JIS10KRF or ANSI150L bRF	102	263		427		355	720	212	250	200	350	250	80	40				
	132SM	5.5 7.5								180	400	765											85	80
	160LM	11 15																						120
GMPL-8515	112M	3.7	80	JIS10KRF or ANSI150L bRF	50	JIS10KRF or ANSI150L bRF	102	263		422		355	720	212	250	200	350	250	80	40				
	132SM	5.5 7.5								180	400	765											85	80
	160ML	11 15																						120
GMPL-5225-LF	112M	3.7	50		25		102	263		427		355	720	212	250	200	350	250	90	40				
	132SM	5.5 7.5								180	400	765											95	80
	160ML	11 15																						130



펌프 모니터는 귀펌프를 공회전이나 케비테이션으로 부터 보호할것이다.

펌프 모니터 (옵션장치) 는 공회전이나 밸브 잠금상태에서 작동, 마그네틱 드라이브의 디커플링 이 감지 되었을때 전류변화 체크 시스템을 통해 감지되어 펌프가 자동으로 스톱되게끔 한다.